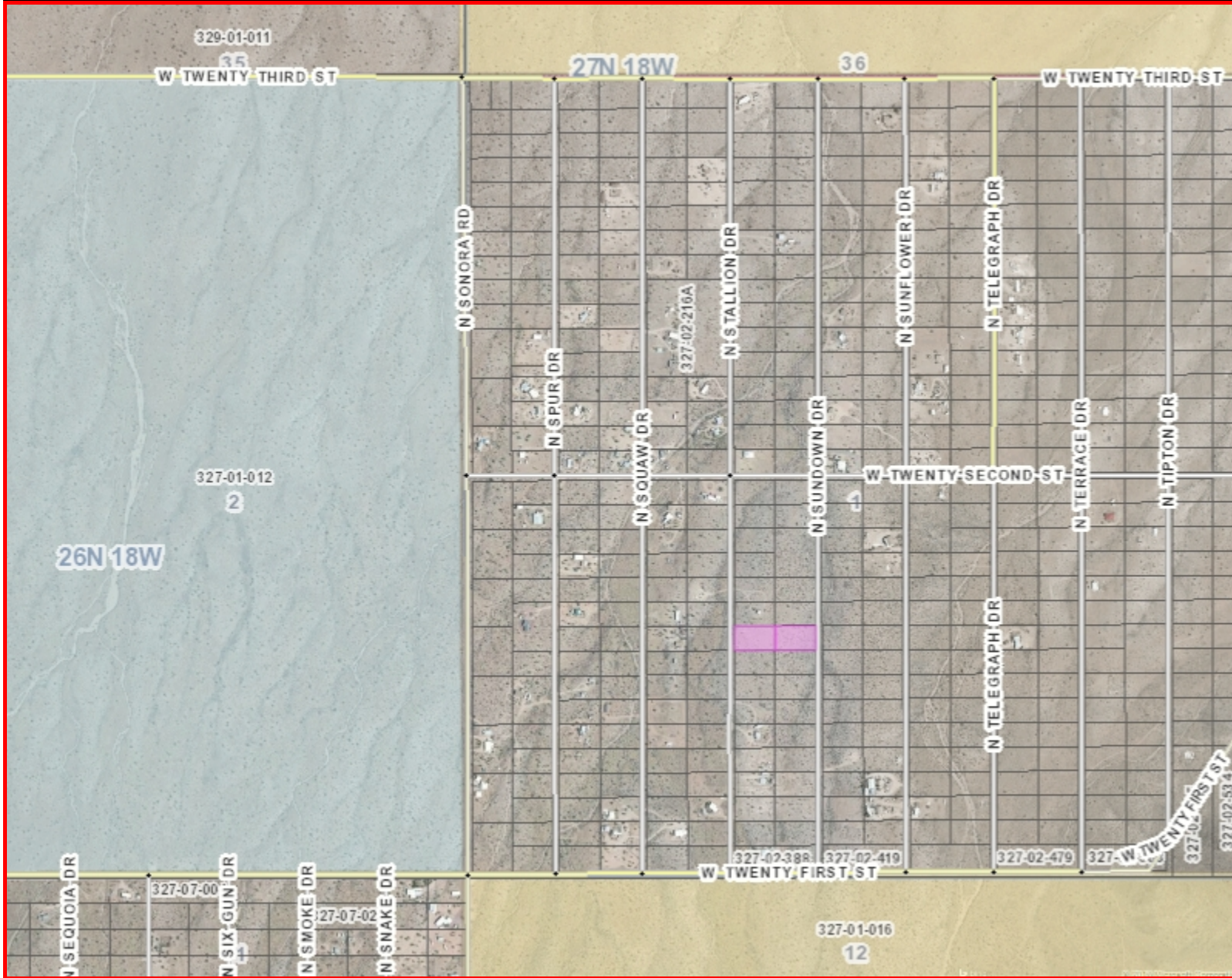


# Lake Mohave Ranchos #13A Lots 7+25 Block M



### Legend

- ADOT Mileposts
- COUNTY Mileposts
- Sign Post Exists
- Calculated Measure
- Highways
- Main Arterials
- Collectors
- Local
- Railroad
- (greater than 1:200,000 scale)
- Township/Range
- Section
- Surface Management**
- AZ Game and Fish
- Bureau of Land Management
- Bureau of Reclamation
- City or County Parks
- Indian Reservation
- Military Reservation
- National Parks
- National Wildlife Refuge
- Other
- Private
- State Parks
- State Trust
- US Forest Service

1: 14,509



0 1,209.1 2,418.1 Feet



(approximate scale)

Map Created: 5/15/2017

This map is a user generated static output from the Mohave County Interactive Map Viewer and is for general reference only. Data layers that appear on this map may or may not be accurate, current, or otherwise reliable. THIS MAP IS NOT TO BE USED FOR NAVIGATION, AS A LEGAL DOCUMENT, FOR PROPERTY DESCRIPTIONS, OR DETERMINATION OF LEGAL TITLE, AND SHOULD NEVER BE SUBSTITUTED FOR SURVEY OR DEED INFORMATION. The user agrees to comply with the Limitation of Use, and Assumption of Risk as stated in the full disclaimer at <http://gis.mohavecounty.us>

### Notes:

Two lots back to back in the Joshua tree forest between 21st and 22nd St. Power may be at one of the lots Both lots are \$8,000 File 17002 on Stallion and Sundown