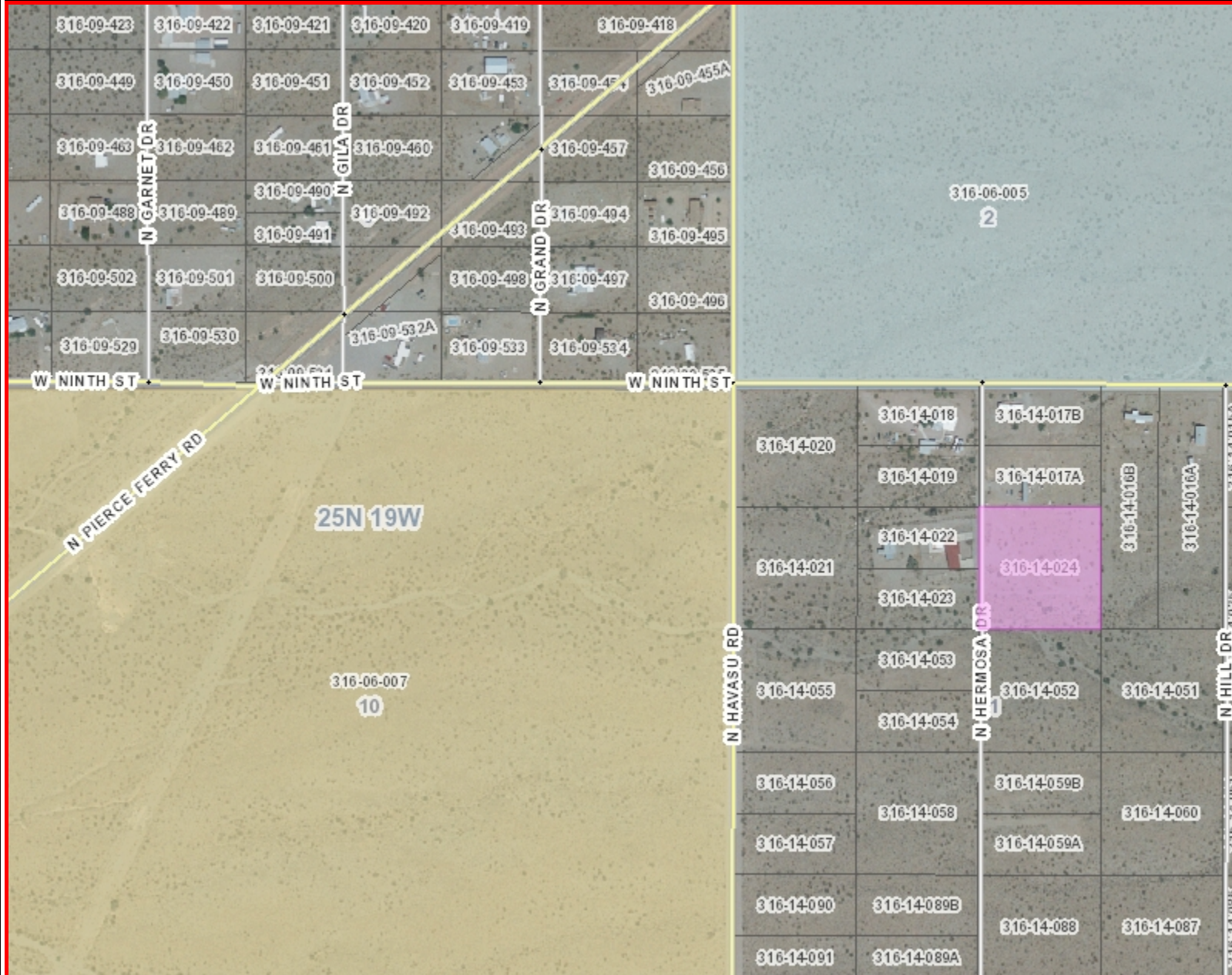


Lake Mohave Ranchos #02 S-11 Lot 19



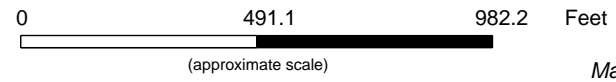
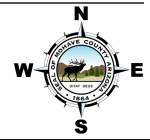
Legend

- ADOT Mileposts
- COUNTY Mileposts
- Sign Post Exists
- Calculated Measure
- Highways
- Main Arterials
- Collectors
- Local
- Railroad
- (greater than 1:200,000 scale)
- Township/Range
- Section

Surface Management

- AZ Game and Fish
- Bureau of Land Management
- Bureau of Reclamation
- City or County Parks
- Indian Reservation
- Military Reservation
- National Parks
- National Wildlife Refuge
- Other
- Private
- State Parks
- State Trust
- US Forest Service

1: 5,893



This map is a user generated static output from the Mohave County Interactive Map Viewer and is for general reference only. Data layers that appear on this map may or may not be accurate, current, or otherwise reliable. THIS MAP IS NOT TO BE USED FOR NAVIGATION, AS A LEGAL DOCUMENT, FOR PROPERTY DESCRIPTIONS, OR DETERMINATION OF LEGAL TITLE, AND SHOULD NEVER BE SUBSTITUTED FOR SURVEY OR DEED INFORMATION. The user agrees to comply with the Limitation of Use, and Assumption of Risk as stated in the full disclaimer at <http://gis.mohavecounty.us>

Notes:
Waterline and power on this 2.5 acre lot. Close to Pierce Ferry Rd. Parcel # 316-14-024 on Hermosa \$25,000 File 17014