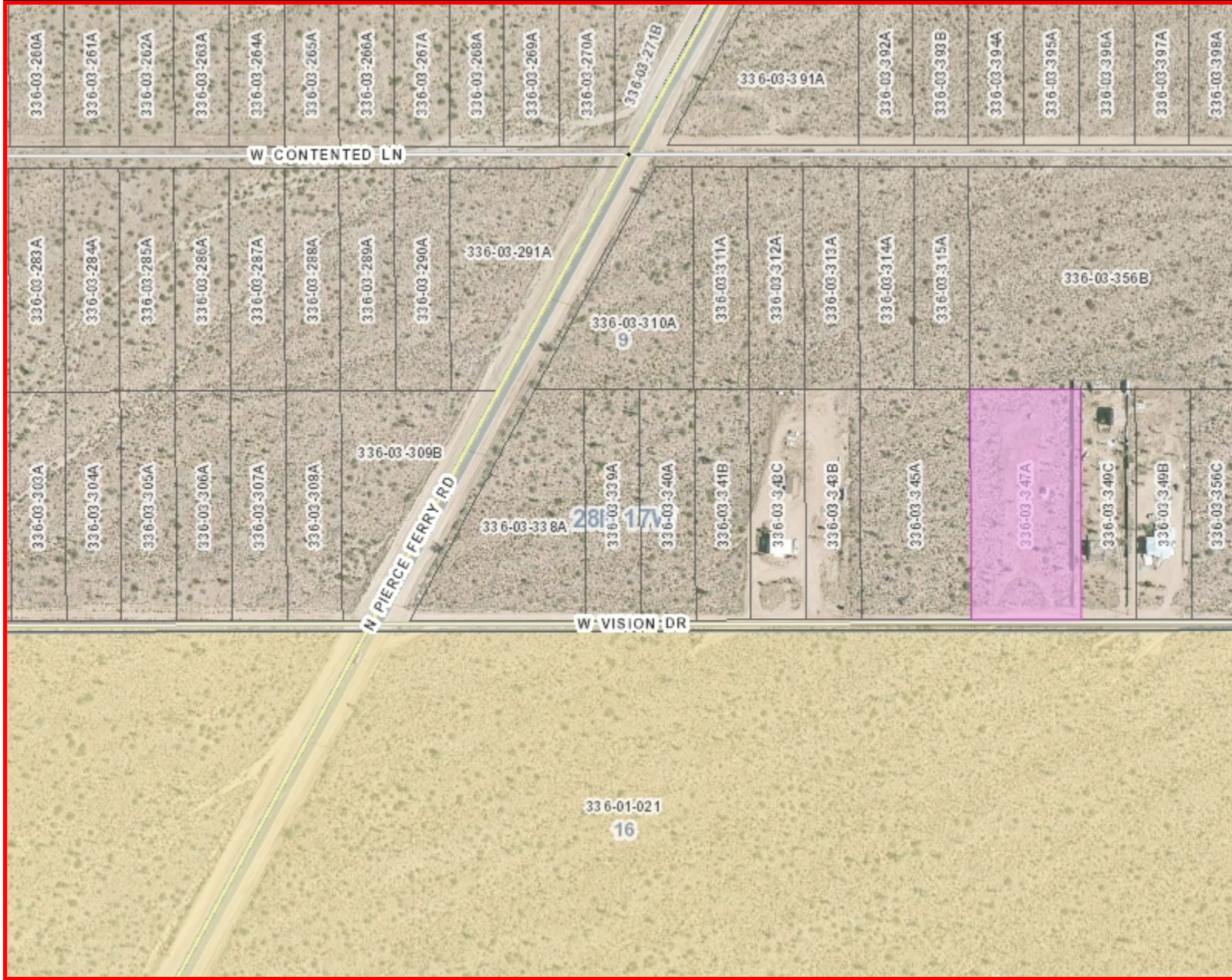


# Joshua Park Estates



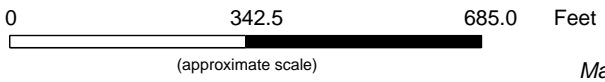
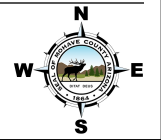
**Legend**

- ADOT Mileposts
- COUNTY Mileposts
- Sign Post Exists
- Calculated Measure
- Highways
- Main Arterials
- Collectors
- Local
- Railroad
- (greater than 1:200,000 scale)
- Township/Range
- Section

**Surface Management**

- AZ Game and Fish
- Bureau of Land Management
- Bureau of Reclamation
- City or County Parks
- Indian Reservation
- Military Reservation
- National Parks
- National Wildlife Refuge
- Other
- Private
- State Parks
- State Trust
- US Forest Service

1: 4,110



Map Created: 5/3/2017

This map is a user generated static output from the Mohave County Interactive Map Viewer and is for general reference only. Data layers that appear on this map may or may not be accurate, current, or otherwise reliable. THIS MAP IS NOT TO BE USED FOR NAVIGATION, AS A LEGAL DOCUMENT, FOR PROPERTY DESCRIPTIONS, OR DETERMINATION OF LEGAL TITLE, AND SHOULD NEVER BE SUBSTITUTED FOR SURVEY OR DEED INFORMATION. The user agrees to comply with the Limitation of Use, and Assumption of Risk as stated in the full disclaimer at <http://gis.mohavecounty.us>

**Notes:**  
2 lots side by side total of 2 acres. Not far off Pierce Ferry Rd just past Mile Post 25. \$20,000 for both lots File 17015